



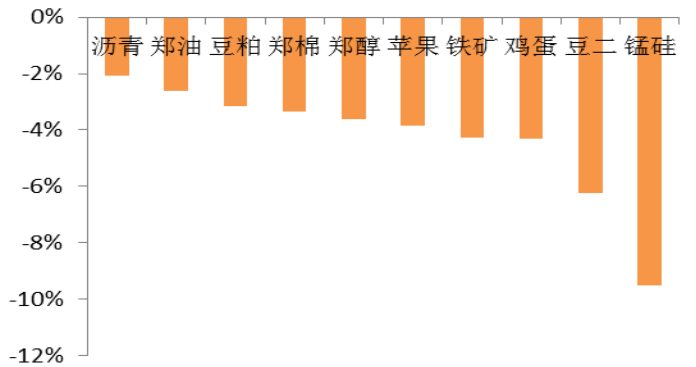
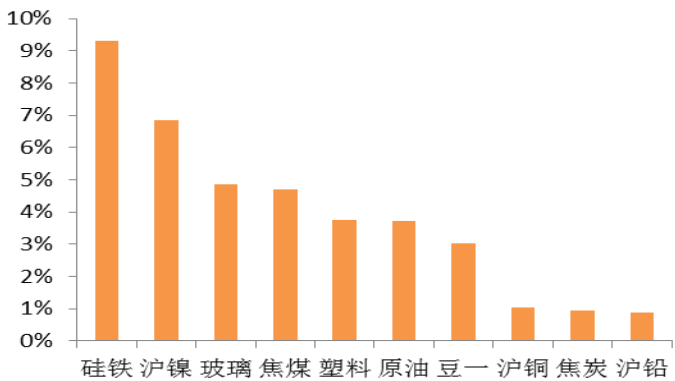
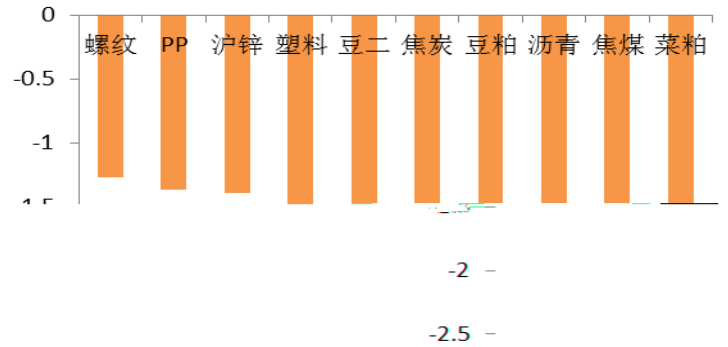
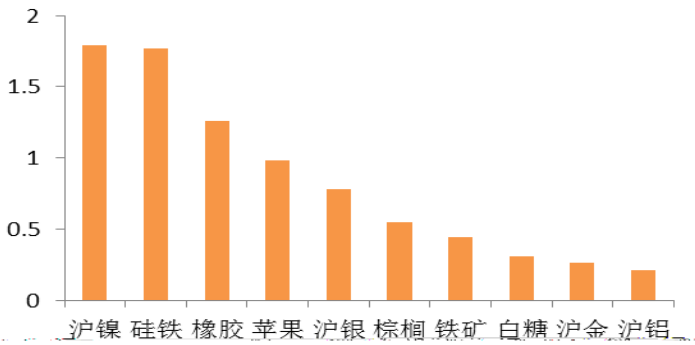
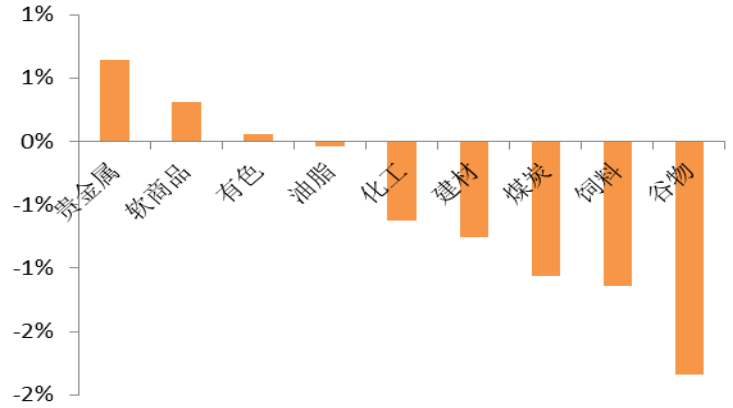
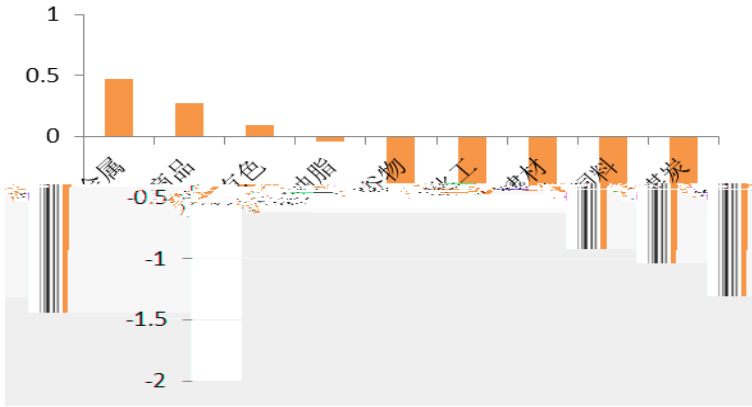
021-68555105

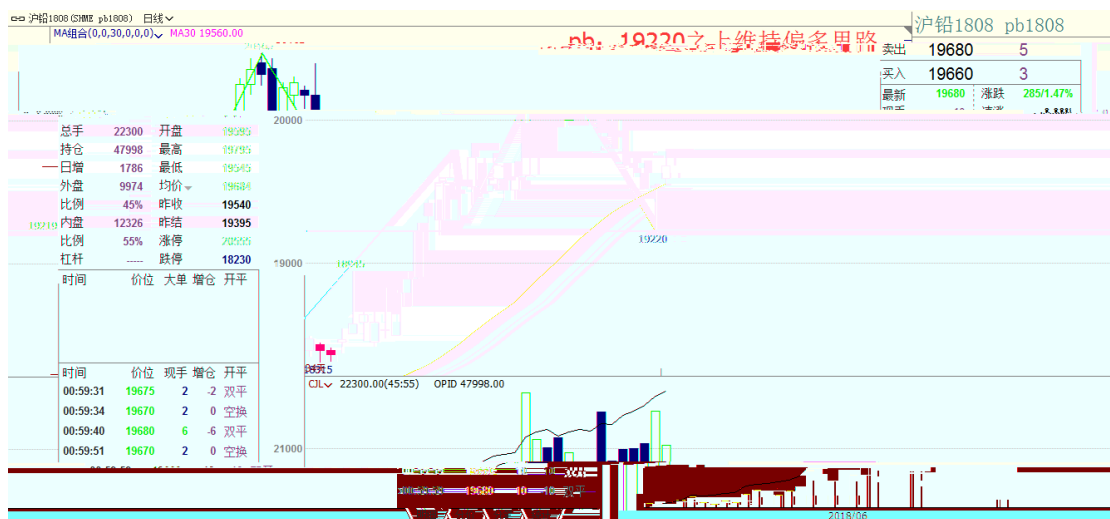
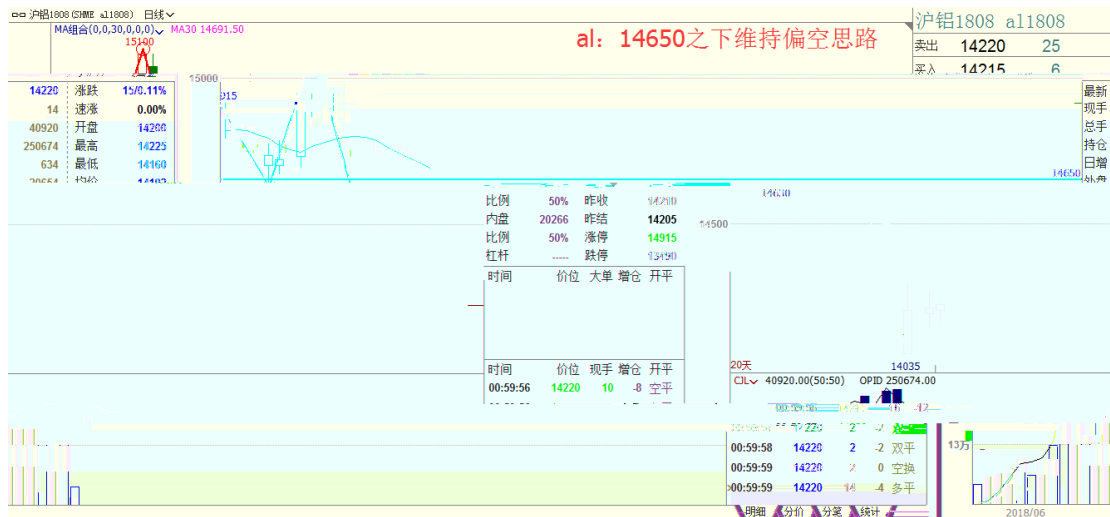
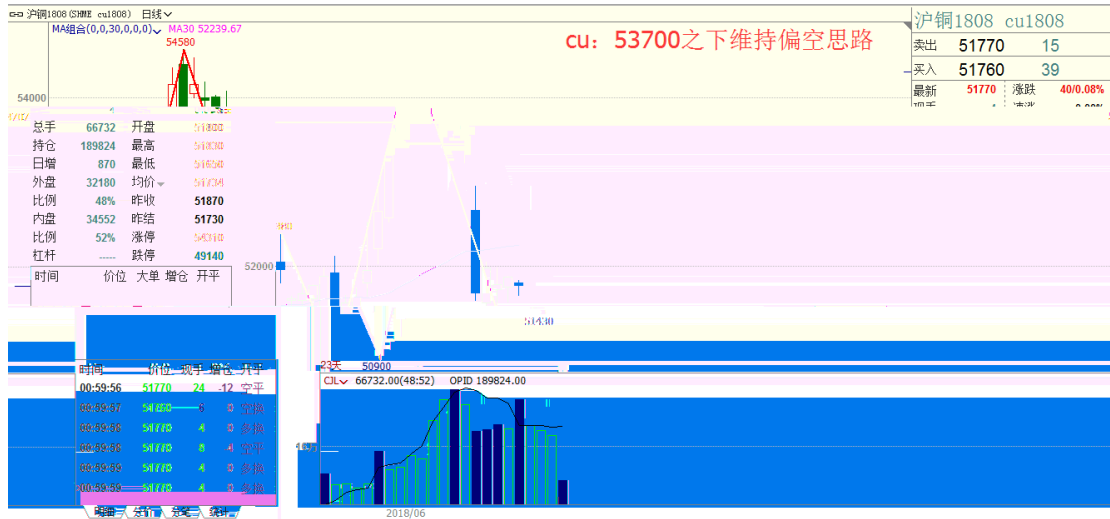


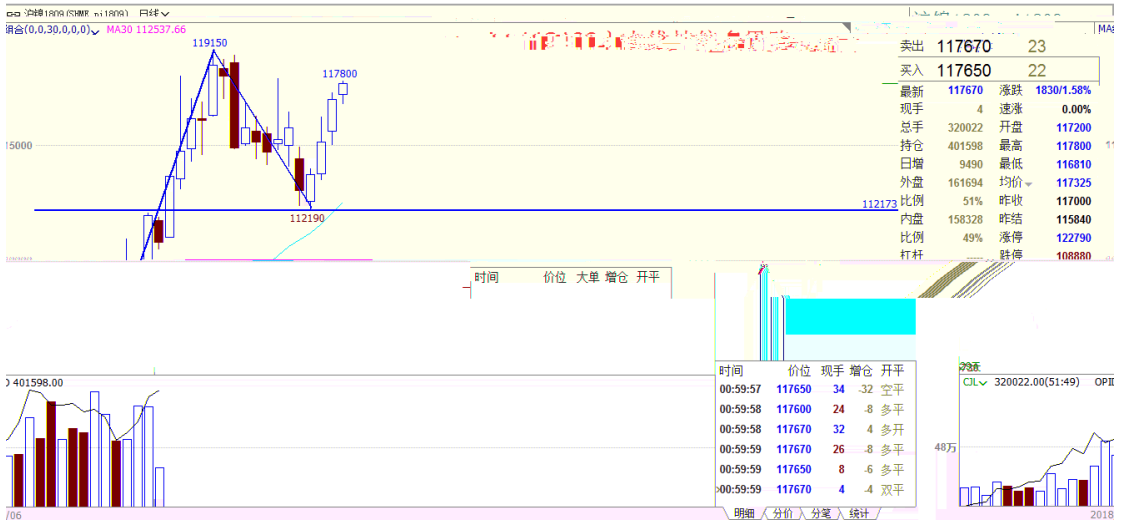
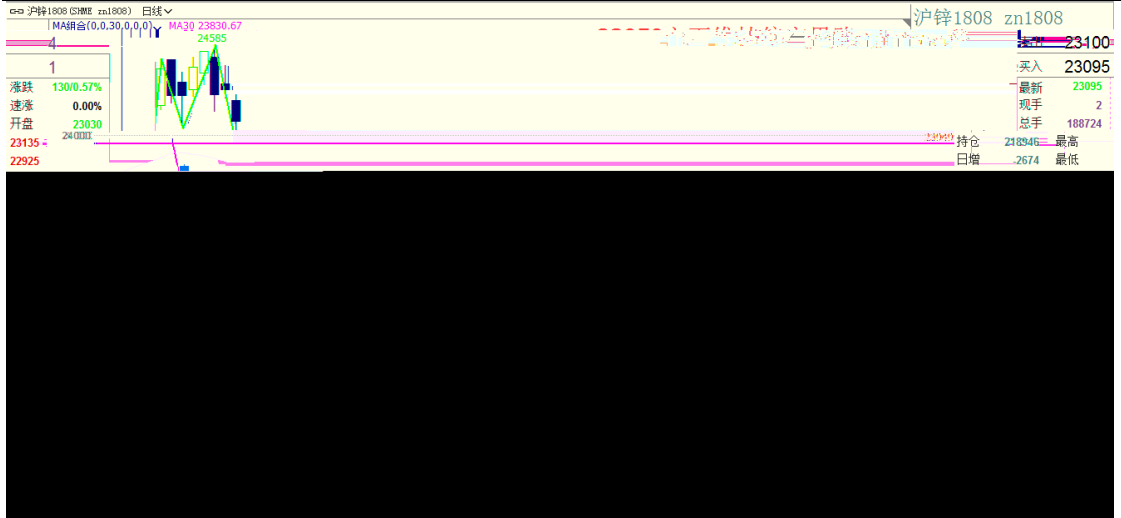
0.64%
0.31%
0.05%
-0.04%
-0.62%
-0.76%
-1.06%
-1.14%
-1.84%

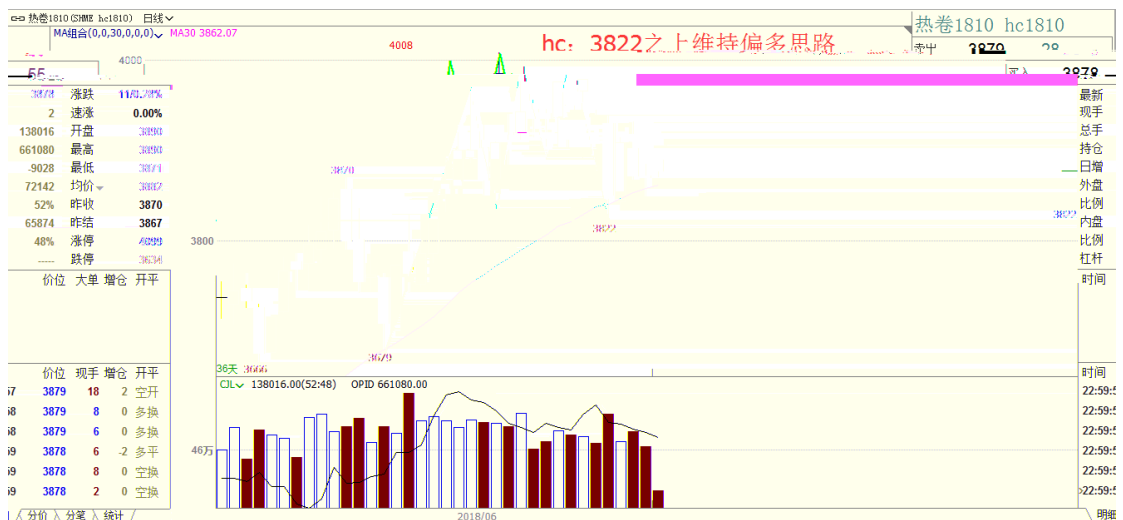
4.12

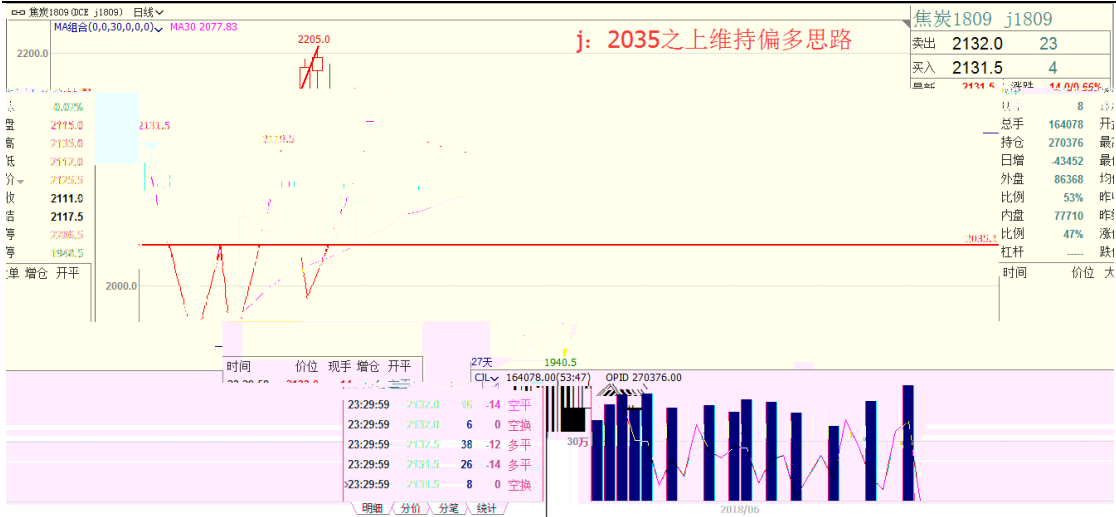
9.30%	-9.53%
6.84%	-6.24%
4.87%	-4.31%
4.70%	-4.26%
3.74%	-3.86%



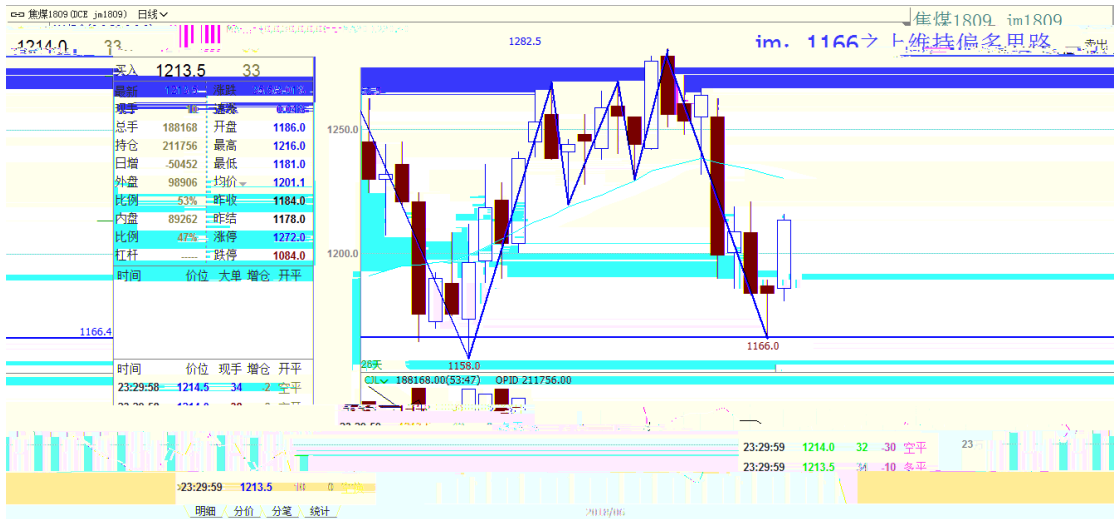








焦炭1809 j1809	
卖出	2132.0 23
买入	2131.5 4
最新	2131.5 涨跌 0.20%
现手	8
总手	164078 升
持仓	270376 最
日增	-43452 最
外盘	86368 均
比例	53% 昨
内盘	77710 昨
比例	47% 涨
杠杆	----- 跌
时间	价格 大



焦煤1809 jm1809	
卖出	1214.0 33
买入	1213.5 33
最新	1214.0 涨跌 -0.08%
现手	8
总手	188162 升
持仓	211756 最
日增	-50452 最
外盘	98906 均
比例	53% 昨
内盘	89262 昨
比例	47% 涨
杠杆	----- 跌
时间	价格 大单 增仓 开平



铁矿1809 i1809	
卖出	468.0 444
买入	467.5 743
最新	468.0 涨跌 13.02%
现手	8 涨跌 0.11%
总手	953420 开盘 458.5
持仓	1316580 最高 468.5
日增	-92286 最低 457.5
外盘	560290 均价 464.2
比例	59% 昨收 457.5
内盘	393130 昨结 455.0
比例	41% 涨停 491.0
杠杆	----- 跌停 419.0
时间	价格 大单 增仓 开平

