

SC1809

493.4 /

0.47%

1318842

32128

WTI

68.26 /

2.42%

Brent

73.07 /

3% WTI Brent

500

EIA

OPEC

SC1809	490.4	491.3	-0.9	-0.18%	/
WTI	68.26	69.95	-1.69	-2.42%	/
Brent	73.07	75.33	-2.26	-3.00%	/
WTI-Brent	4.81	5.38	-0.57	-10.59%	/
WTI1808-WTI1809	2.2	1.06	1.14	107.55%	/
Brent1809-Brent1810	-0.07	0.07	-0.14	-2	/
WTI	70.46	71.01	-0.55	-0.77%	/
Brent	72.71	74.25	-1.54	-2.07%	/
OPEC	70.91	72.15	-1.24	-1.72%	/
	70.92	71.31	-0.39	-0.55%	/
	70.5	71.49	-0.99	-1.38%	/
NYMEX	206.9	210.67	3.77	1.79%	/
NYMEX	210.44	213.34	2.9	1.36%	/
ICE	644.75	654.25	9.5	1.45%	/

Bloomberg Wind



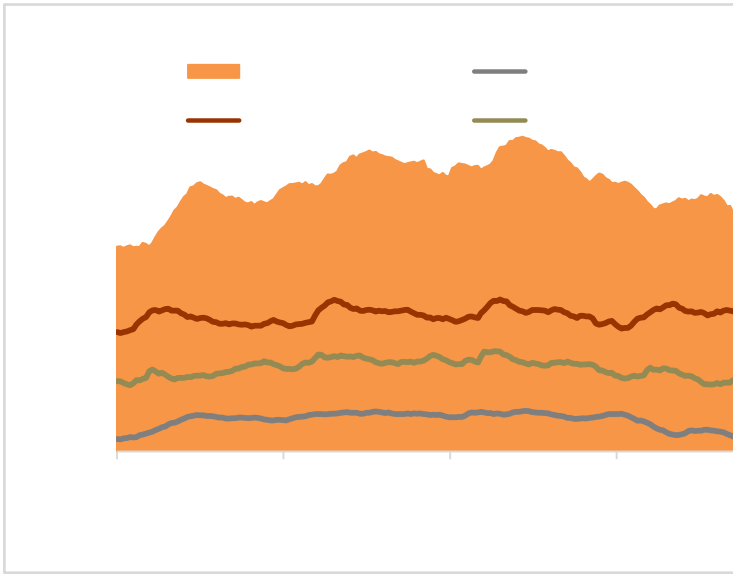


Blank white area for the main content of the page.



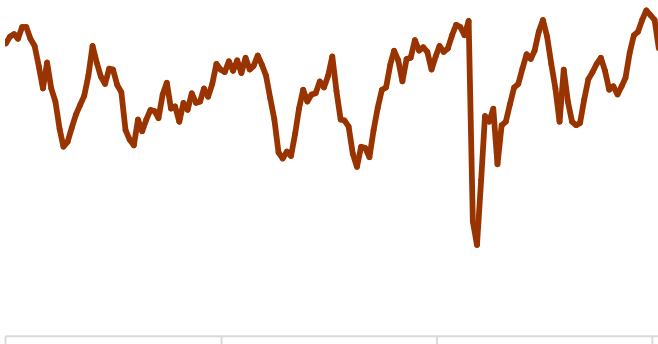
6

7



8

9

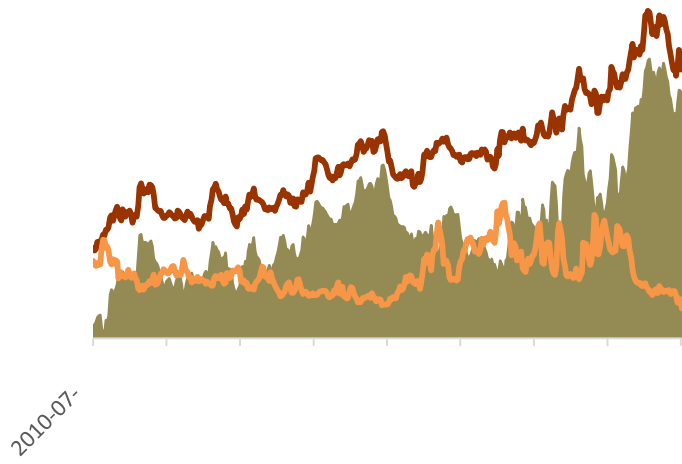


WTI

	(CFTC)	7	17
NYMEX	63.13		23171
	71.05	44800	79177
			21629

10WTI

11 WTI



Wind

400-700-0188



273

021-68559999
021-68550055

300

2603 2904
021-68400688

3069

A 2908
0755-82874655

69

1201
0371-65613449

67

D 705
0411-84803386

1287

A2506
0562-5819717

