



2018年12月3日星期一

联系人 黄蕾  
 电子邮箱 jytzzx@jyqh.com.cn  
 电话 021-68555105

SC1901 406.7 / 418.1 /  
 2451536 36168  
 414.3 / WTI 50.93 / 1.01% Brent 59.46  
 / 0.71% WTI Brent  
 G20 12 10 OPEC  
 2016 1120 /  
 1140 / EIA  
 1170  
 60 /  
 WTI 50 / Brrent 60  
 / SC  
 OPEC 2019 1 100  
 16.6 /  
 G20  
 OPEC+ 2019  
 OPEC+ 12 6

2019 1 1

12

6 OPEC

SC1901	415.3	441	-25.7	-5.83%	/
WTI	50.93	50.42	0.51	1.01%	/
Brent	59.46	59.04	0.42	0.71%	/
WTI-Brent	8.53	8.62	-0.09	-1.04%	/
WTI1901-WTI1902	-0.16	-0.17	0.01	-5.88%	/
Brent1902-Brent1903	-0.12	-0.19	0.07	-36.84%	/
WTI	50.93	54.43	-3.5	-6.43%	/
Brent	58.44	61.93	-3.49	-5.64%	/
OPEC	58.09	60.27	-2.18	-3.62%	/
	58.57	60.49	-1.92	-3.17%	/
	59.25	61.28	-2.03	-3.31%	/
NYMEX	139.96	137.3	-2.66	-1.94%	/
NYMEX	182.35	186.87	4.52	2.42%	/
ICE	550	568.25	18.25	3.21%	/

Bloomberg Wind

1				140-150	/
2		11 25		6244	1295
	3	3	79%		
3	2019		57	/	2018
1060	/	2019	1010	/	
4					
5				"	"
6					
7			11	10	4 /
8			99.53	/	

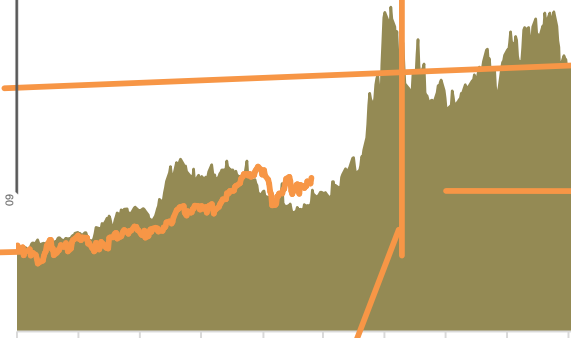
9						
10			60	/		35-45
/						
11				CEO		
1						
12				Carsten Fritsch	2019	
13	10		173	/		58%
10		112	/	3.4%	10	24.716
/		64%				
14						
		1120	/			
15			918	2013	12	
	11		792		90	
			11		54	/
16					26	
		11	28			7%
	10%	11	29	5%	8%	
17					10	
	58%	173	/		10	
3.4%	112	/				
18						
19	12	1		G20		

OPEC+

2019

1 WTI Brent

2



3 WTI

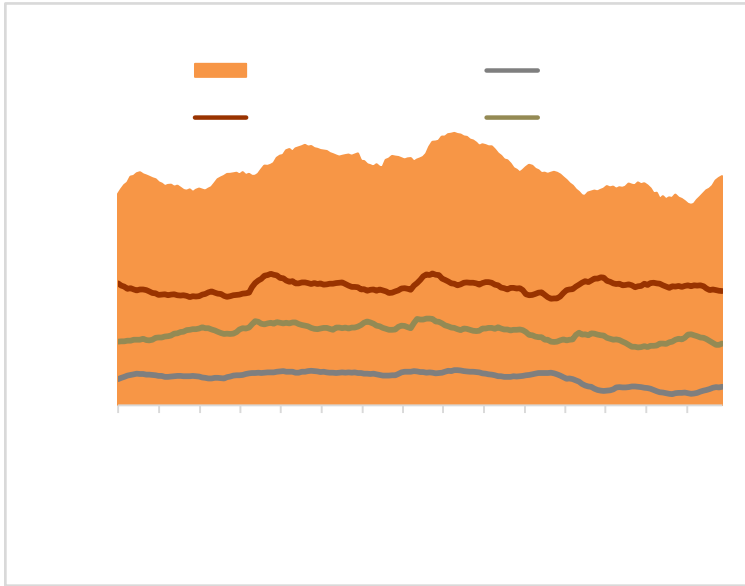
4 Brent

5



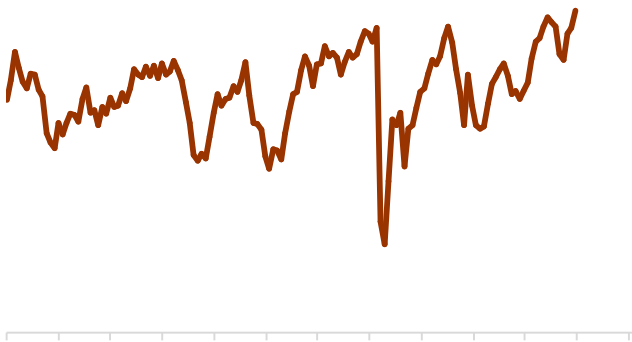
Bloomberg Wind

6



7

8



9

Bloomberg

WTI

(CFTC)

11 27

NYMEX

348121

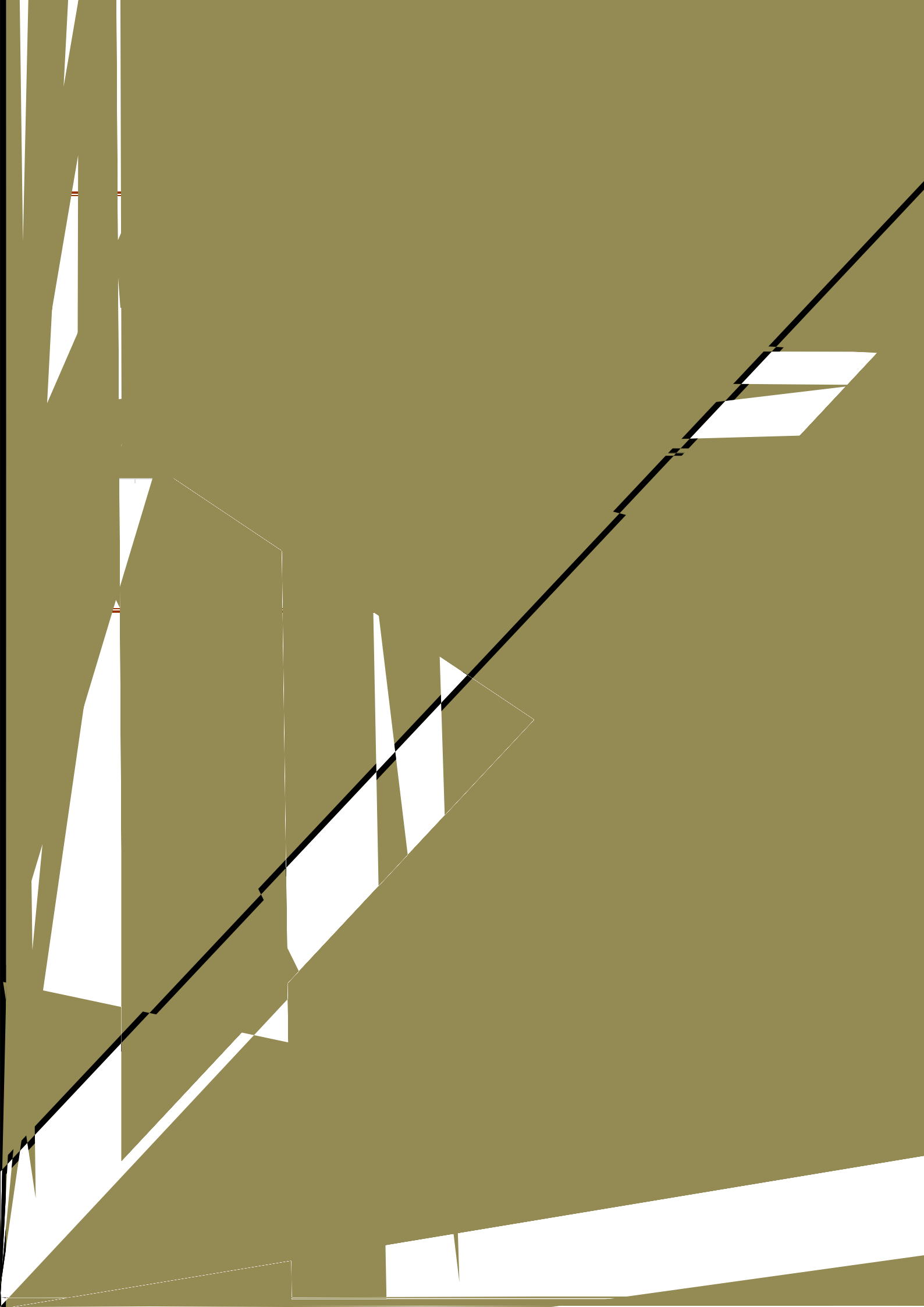
19066

511679

17170

163558

1896





400-700-0188